

GREYSHOES

THE SCULPTURE OF UPTON S. ETHELBAH, JR.





BASKET MAKER
BRONZE
34" x 12" x 8"



APACHE SUNRISE CEREMONY
CARRARA MARBLE
48" x 24" x 7"



AMERICAN BISON
BLACK BELGIAN MARBLE
16" x 23" x 8"

MATACHINA
BRONZE
26" x 12" x 7"



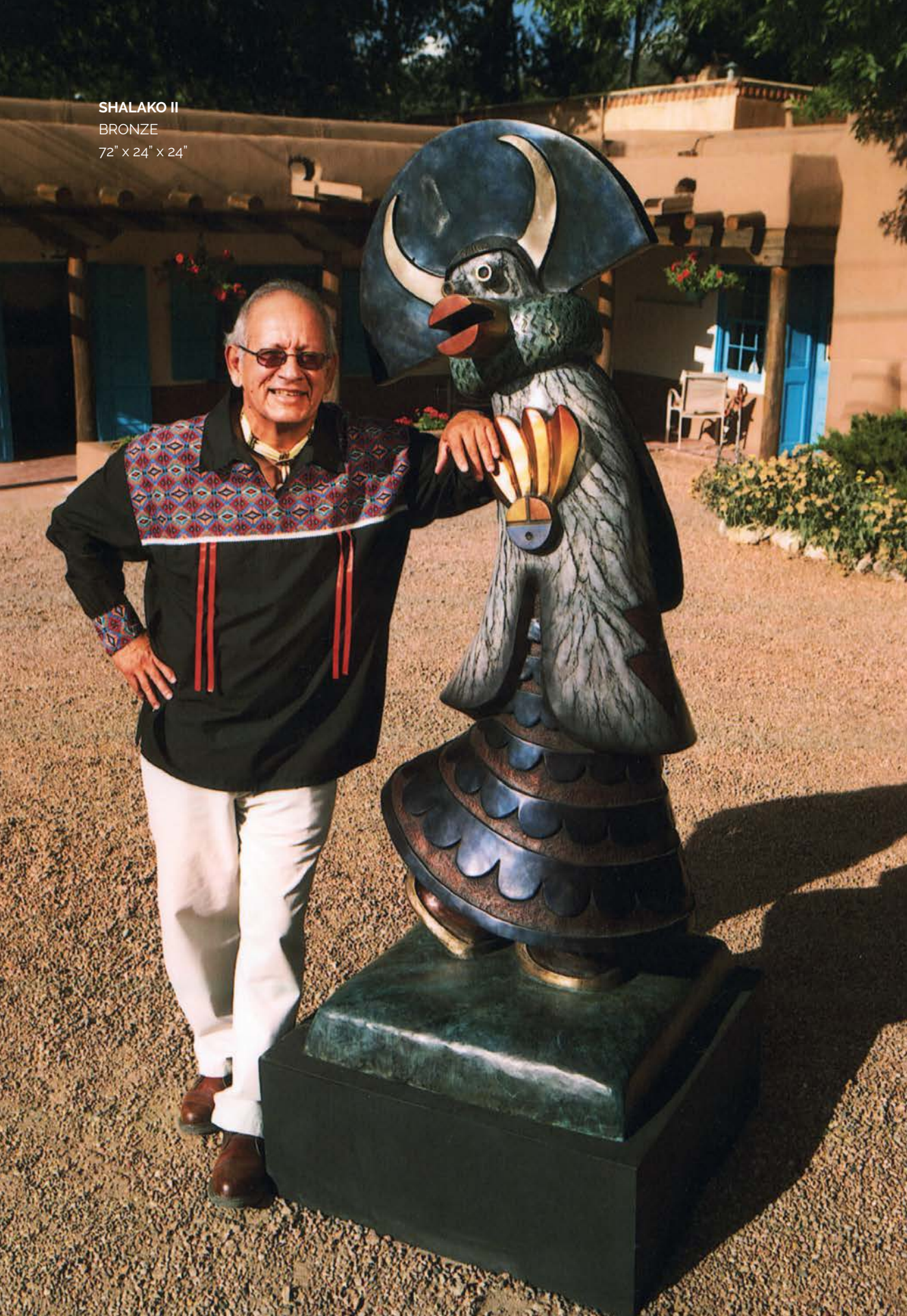
BLUE CORN
BRONZE
28" x 7" x 6"



MOUNTAIN SPIRIT DANCER
ROSA PORTUGUESE MARBLE
34" x 28" x 8"



SHALAKO II
BRONZE
72" x 24" x 24"



APACHE
CROWN DANCER
BRONZE
21" x 11" x 5"

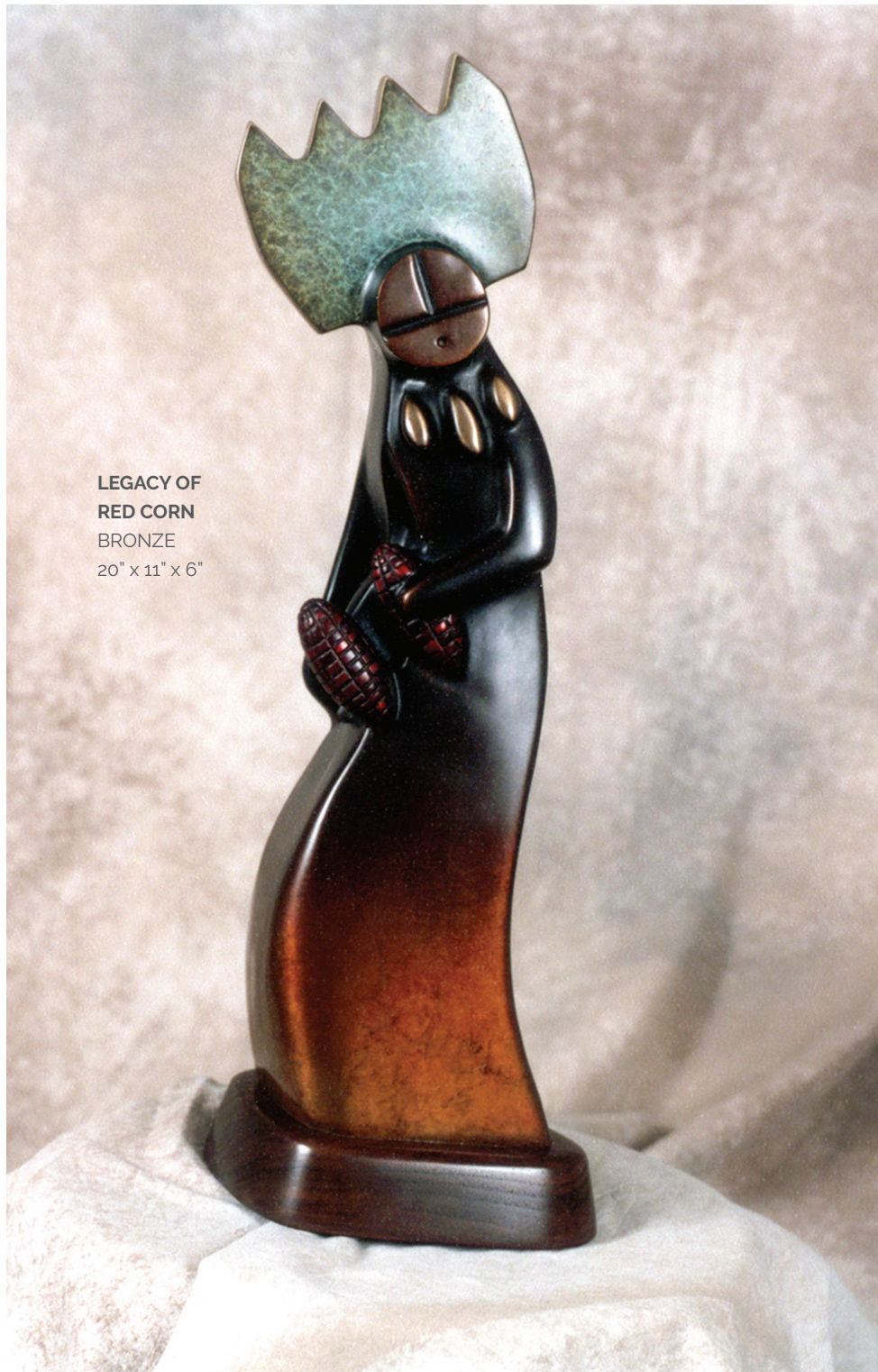




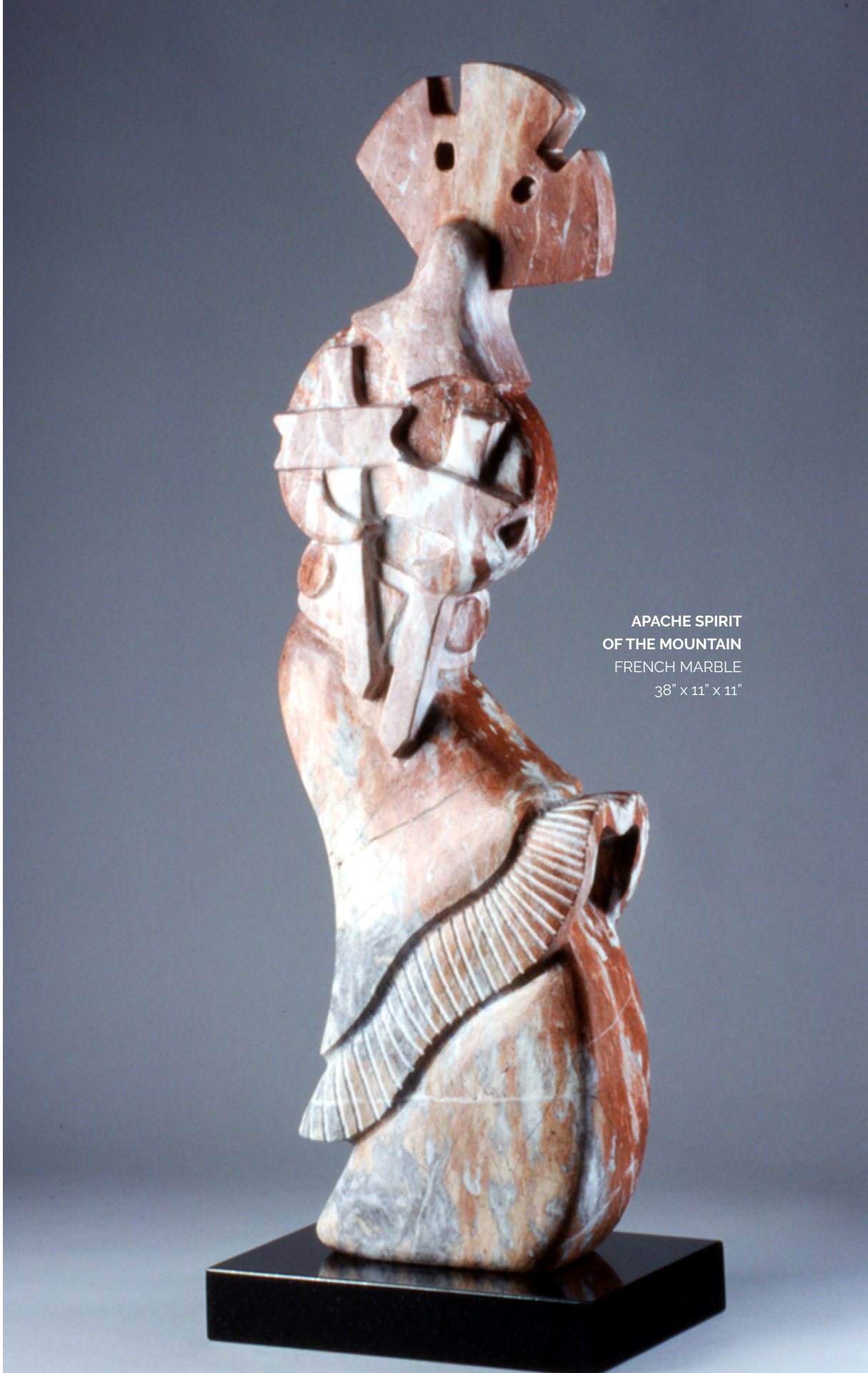
KIVA MAN & KIVA WOMAN
BRONZE DIPTYCH
72" x 24" x 24"



THE BLESSING
BRONZE
25" x 11" x 6"



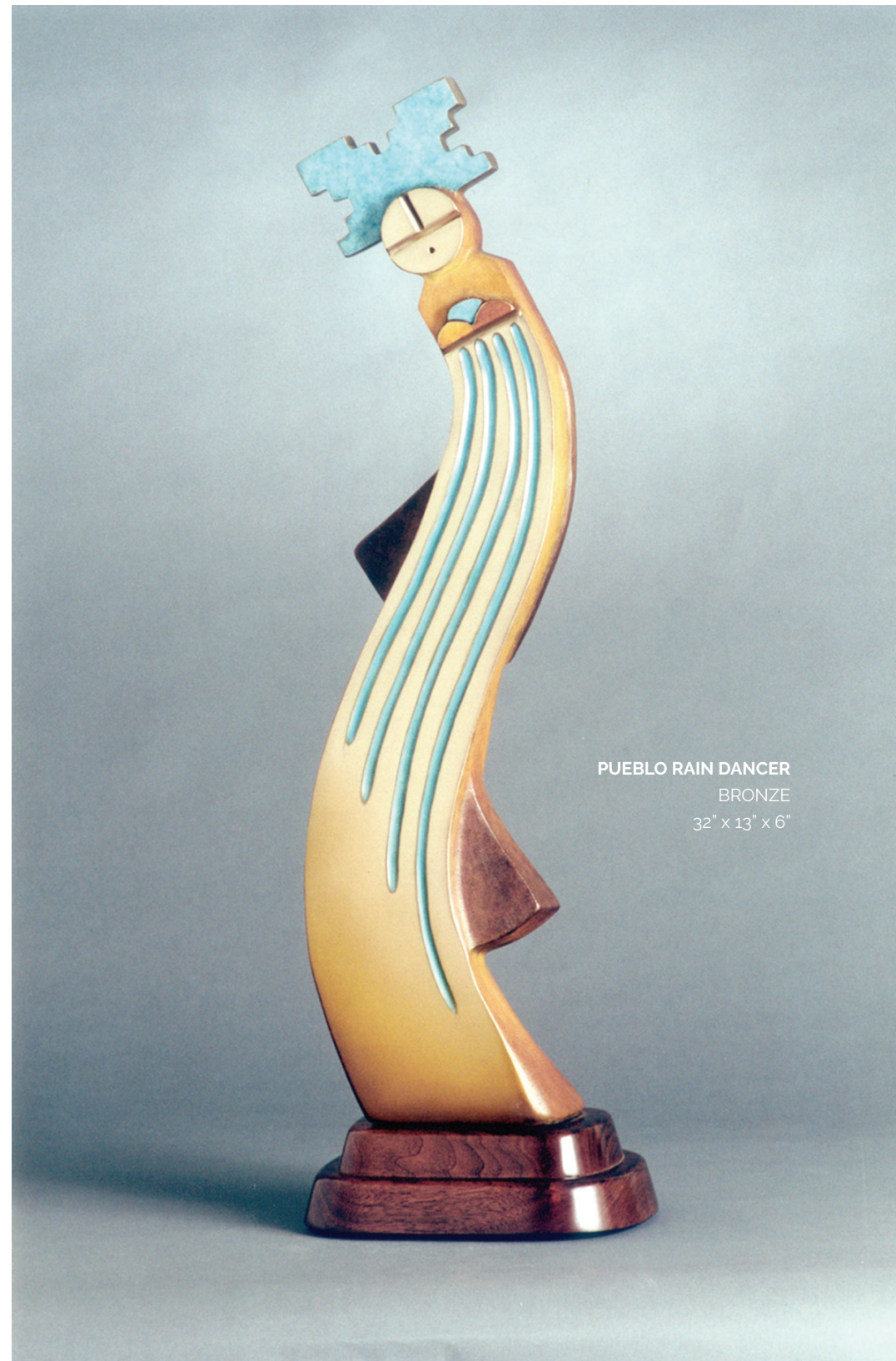
LEGACY OF
RED CORN
BRONZE
20" x 11" x 6"



APACHE SPIRIT
OF THE MOUNTAIN
FRENCH MARBLE
38" x 11" x 11"



URSA MAJOR
BRONZE
14" x 20" x 4"



PUEBLO RAIN DANCER
BRONZE
32" x 13" x 6"



APACHE CROWN DANCER
BRONZE
35" x 15" x 8"



APACHE GAAN
LIMESTONE
16" x 8" x 8"

GAAN DANCER
BRONZE
22" x 11" x 5"



DEER DANCER
ROSA PORTUGUESE MARBLE
32" x 12" x 16"



Greyshoes (Upton S. Ethelbah, Jr.) is a multiple award-winning sculptor whose dynamic, essentialized, and contemporary style is largely inspired by the traditional and ceremonial aesthetic of his Native American heritage.

Greyshoes works exclusively in stone—primarily marble, alabaster, limestone, and calcite. On occasion, certain stone sculptures are selected to be cast in bronze. These limited-edition bronzes feature patinas which bring a variety of colors and textures to the sculptural form.

GREYSHOES.COM